

Setting Up a Wireless LAN Connection (Web User Authentication) for Windows 8.x

The following procedures are required to use a Ritsumeikan University wireless LAN (web user authentication).

1. Wireless LAN settings (SSID)
2. Disabling pop-up blockers
3. Web user authentication
4. Logout

This manual explains these four procedures for connecting to the RAINBOW Network using wireless LAN (web user authentication) in Windows 8.

The wireless LAN network service is available within the wireless LAN service areas on the following campuses:

- Kinugasa Campus
- Biwako-Kusatsu Campus
- Osaka Ibaraki Campus
- Suzaku Campus
- Osaka Umeda Campus
- Tokyo Campus

Please note that the wireless service may not be available at some facilities on the above campuses depending on circumstances.

If you use touch operation instead of conventional mouse in Windows 8, substitute mouse operations with touch operations as below from hereinafter:

Mouse operation	Touch operation
Click	Tap
Right-click	Hold down → Release
Drag	Slide/Swipe

-Content-

1. Wireless LAN Settings [SSID]	2
2. Disabling Pop-up Blockers	7
3. Web User Authentication	10
4. Logout	11

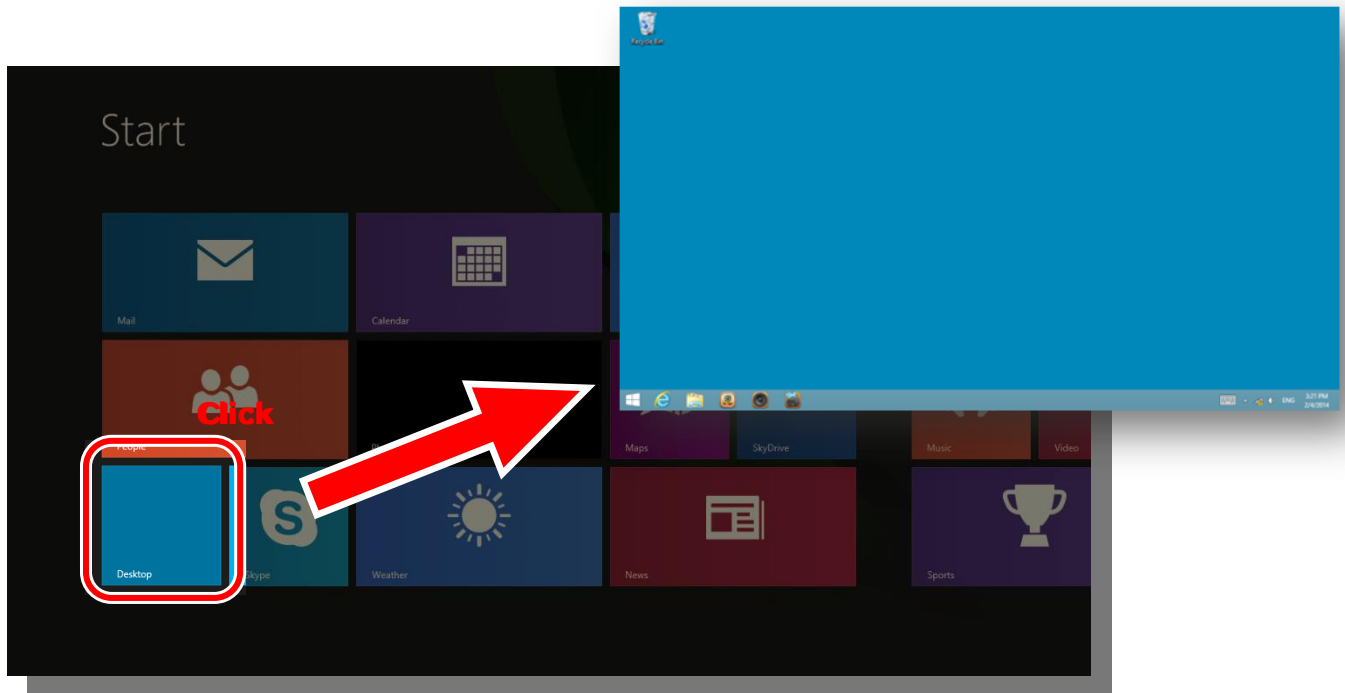
Reference 1 – When the web user authentication page does not display: 12

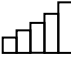
Reference 2 – To use the wireless LAN network next time: 14

Reference 3 – Switching the existing wireless LAN connection: 15

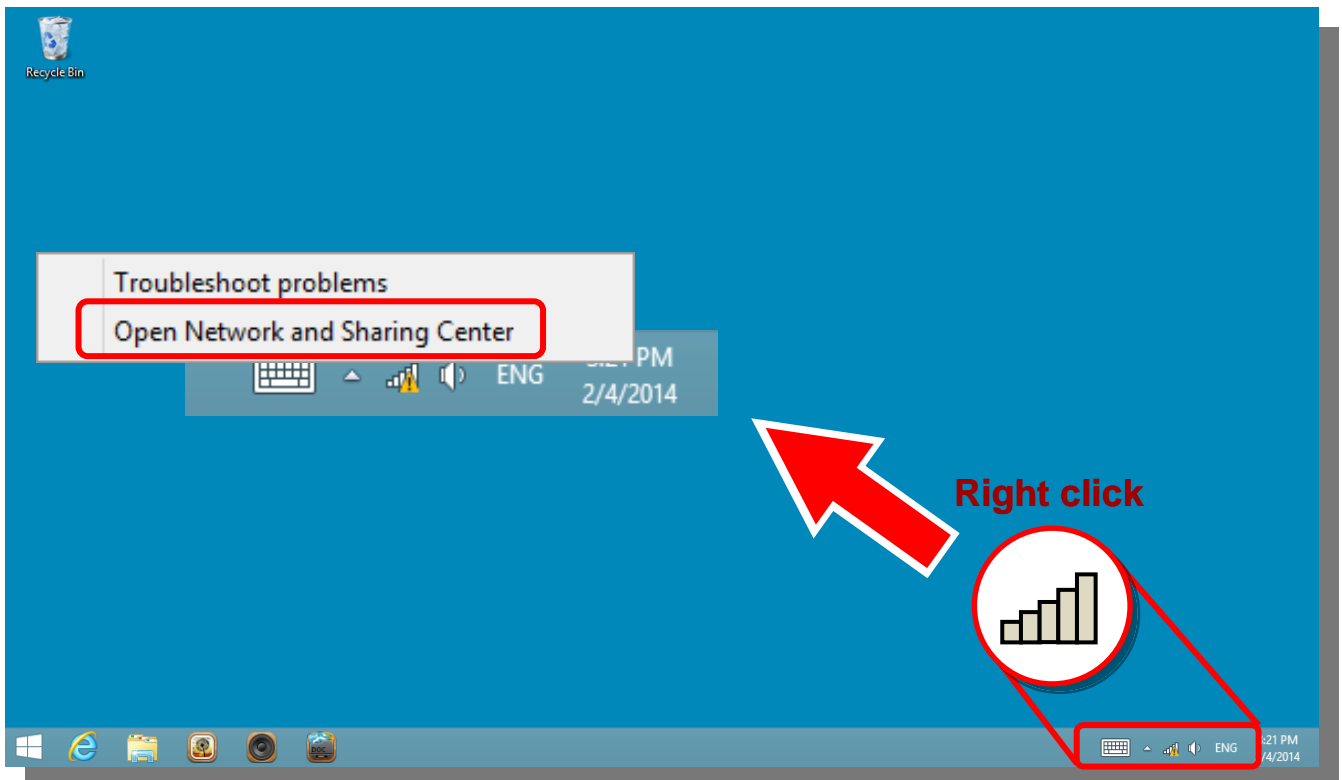
1. Wireless LAN Settings [SSID]

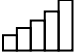
- 1) Click **Desktop** in the **Start** screen to display the desktop.



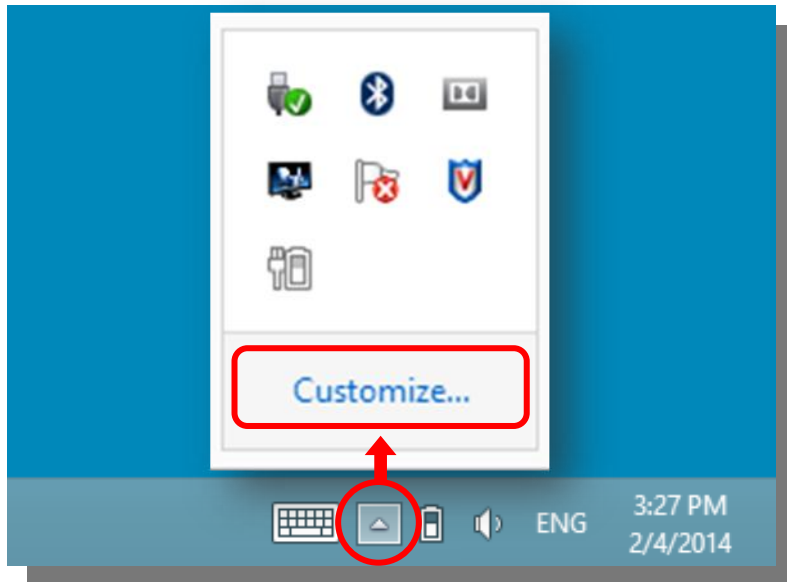
- 2) Right-click the  network icon in the task tray in the lower right corner of the screen and click **Open Network and Sharing Center** displayed in the shortcut menu.

► If the network icon is displayed, proceed to 3 on page 4. If the icon is not displayed, proceed to page 3.

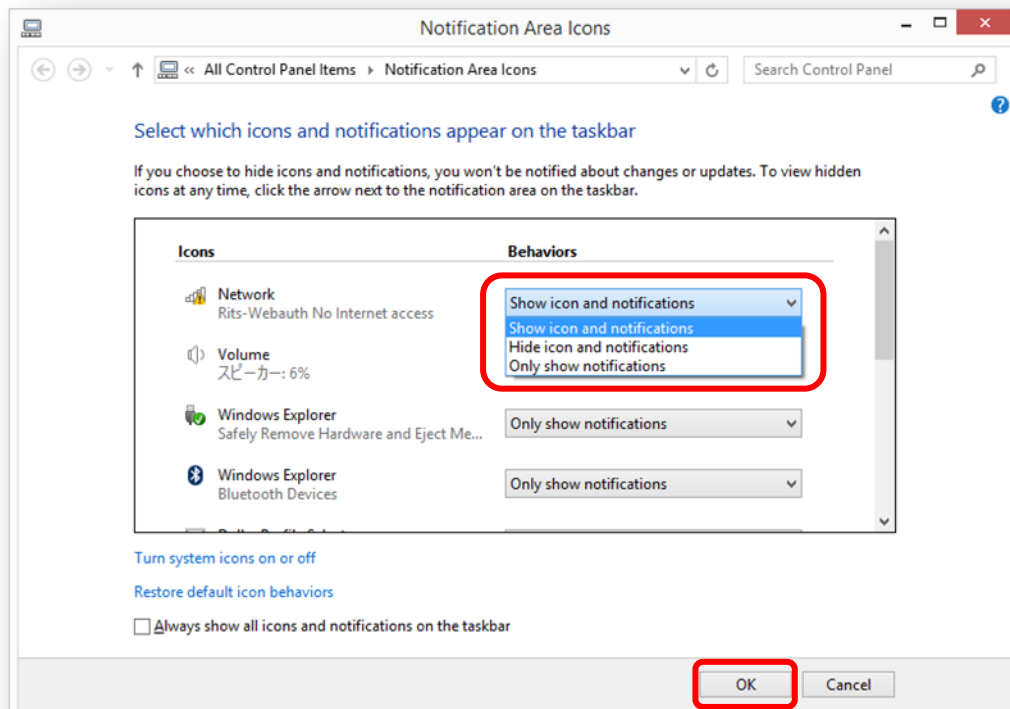


When the  network icon is not displayed in the task tray, change the settings to display the icon at all times.

- i. Click the up arrow button in the task tray to list the temporarily hidden icons. Click **Customize**.

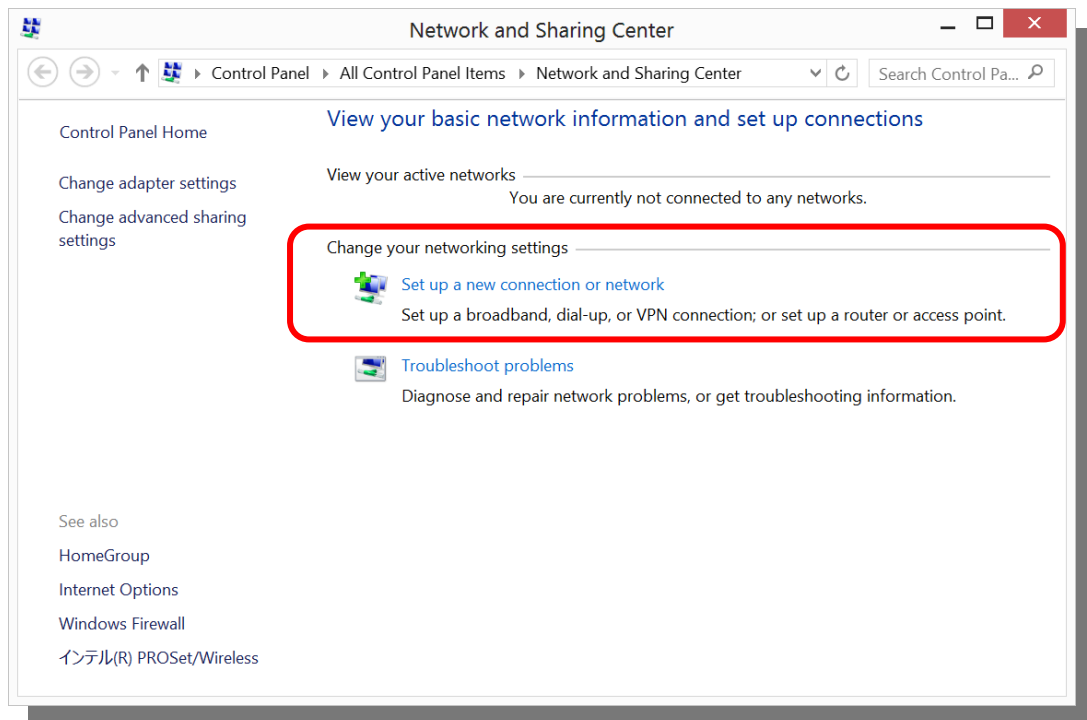


- ii. In the **Notification Area Icons** window, configure the Network to **Show icon and notifications** and click **OK**.

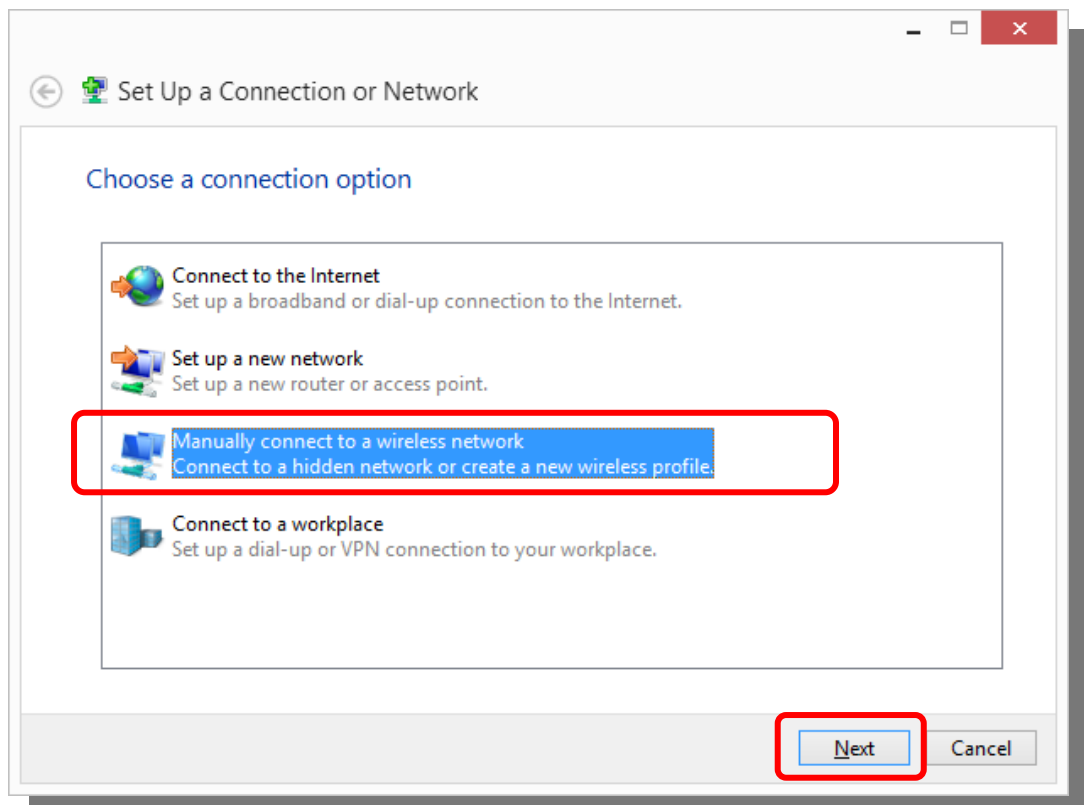


- iii. Make sure that **Show icon and notifications** is displayed in the task tray, and proceed to 1. Wireless LAN settings (SSID) on page 2.

3) Click **Set up a new connection or network** under **Change your networking settings**.



4) Select **Manually connect to a wireless network** in the **Set Up a Connection or Network** window, and click **Next**.



5) Configure the following settings in the **Manually connect to a wireless network** window.

(1) Network name:

Rits-Webauth

*The letters are case-sensitive.

(2) Security type:

WPA2-Personal

(3) Encryption type:

AES

(4) Security key:

webauth.ritsumei.ac.jp

6) After all four items are entered, make sure that the **Start this connection automatically** box is checked and click **Next**.

✧ If a connection cannot be established, try the following settings.

• Note that in Windows 8.1, security type and encryption type are not displayed.

(1) Network name:

Rits-Webauth

*The letters are case-sensitive.

(2) Security type:

WPA-Personal

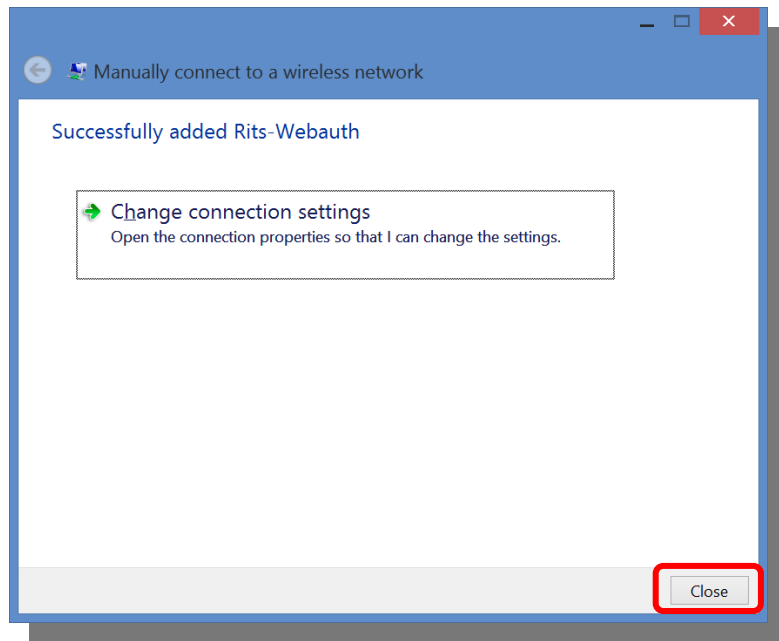
(3) Encryption type:

TKIP

(4) Security key:


webauth.ritsumei.ac.jp

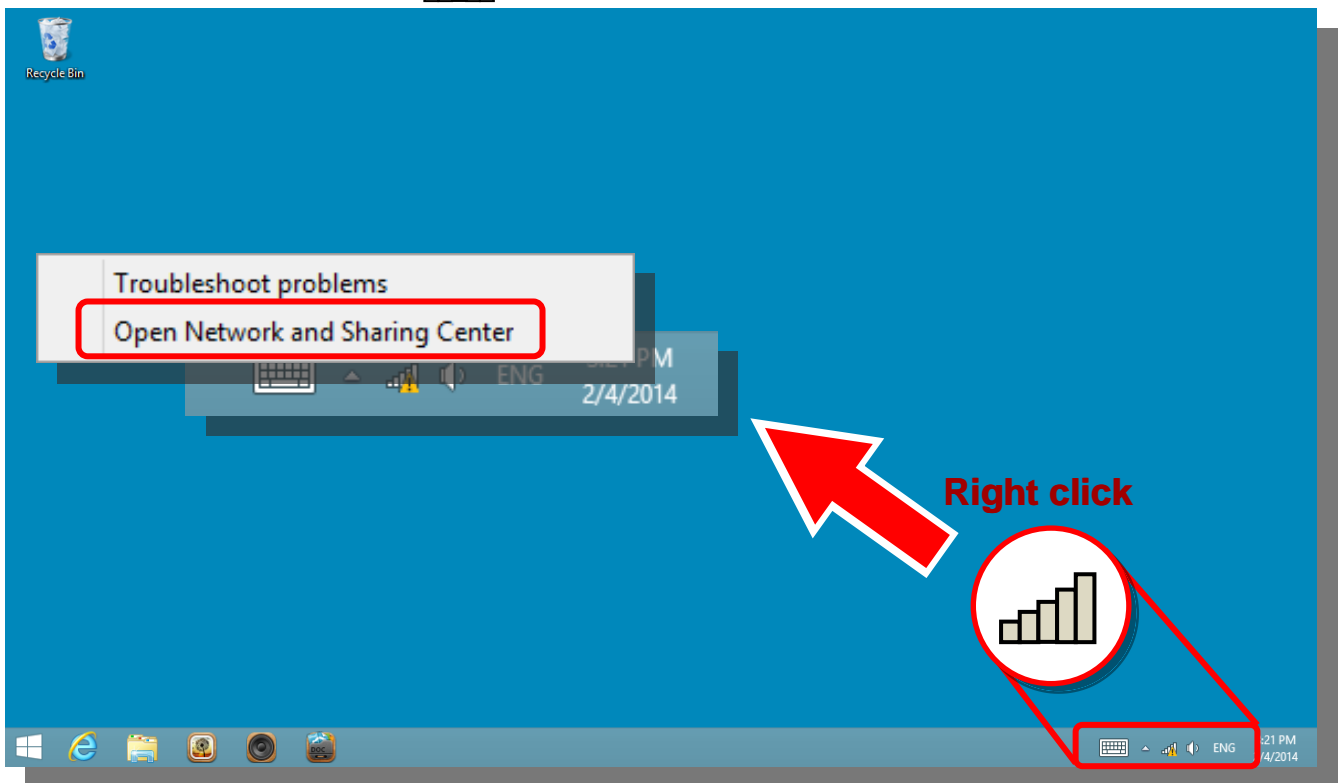
7) Click **Close**.



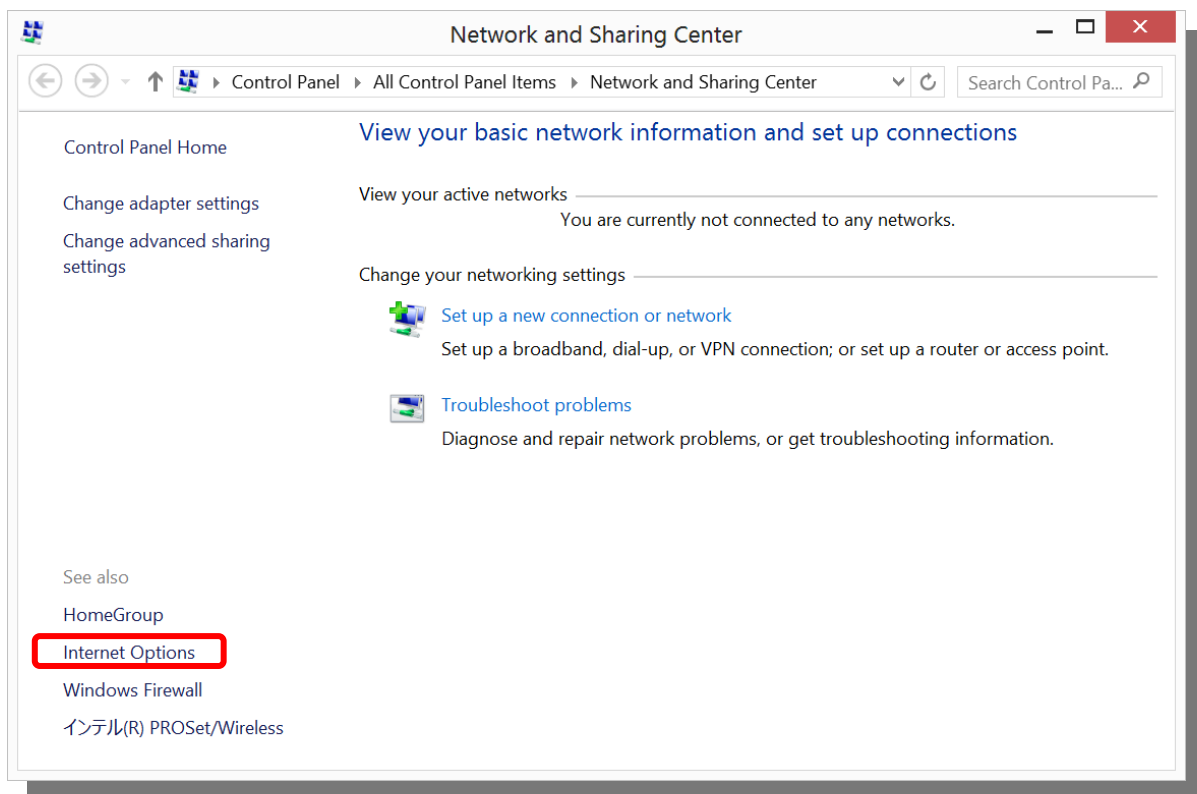
Once wireless LAN settings are complete, the browser will start automatically.

2. Disabling Pop-up Blockers

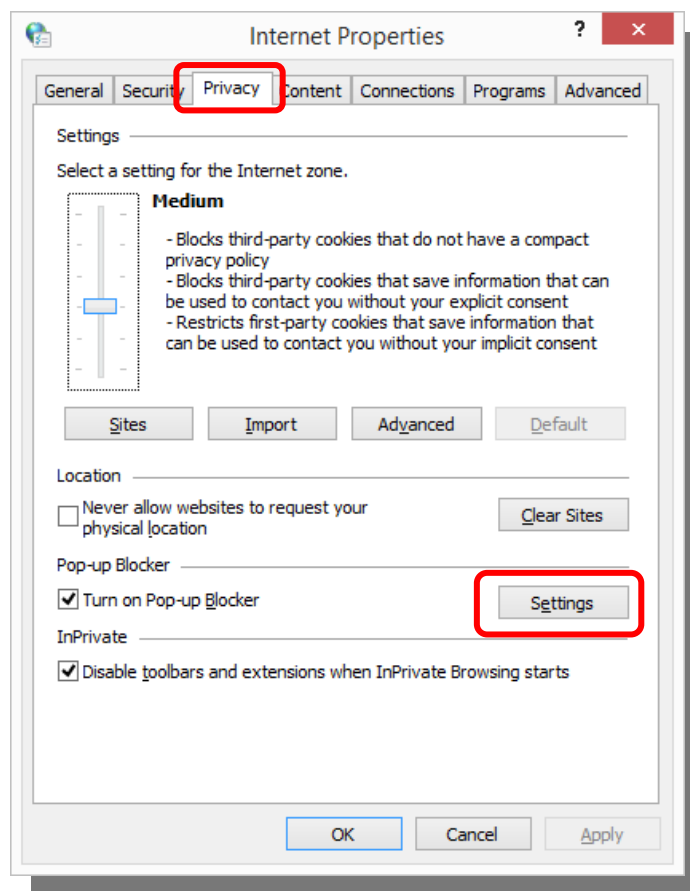
- 1) Display the desktop, right-click  in the task tray, and click **Open Network and Sharing Center**.



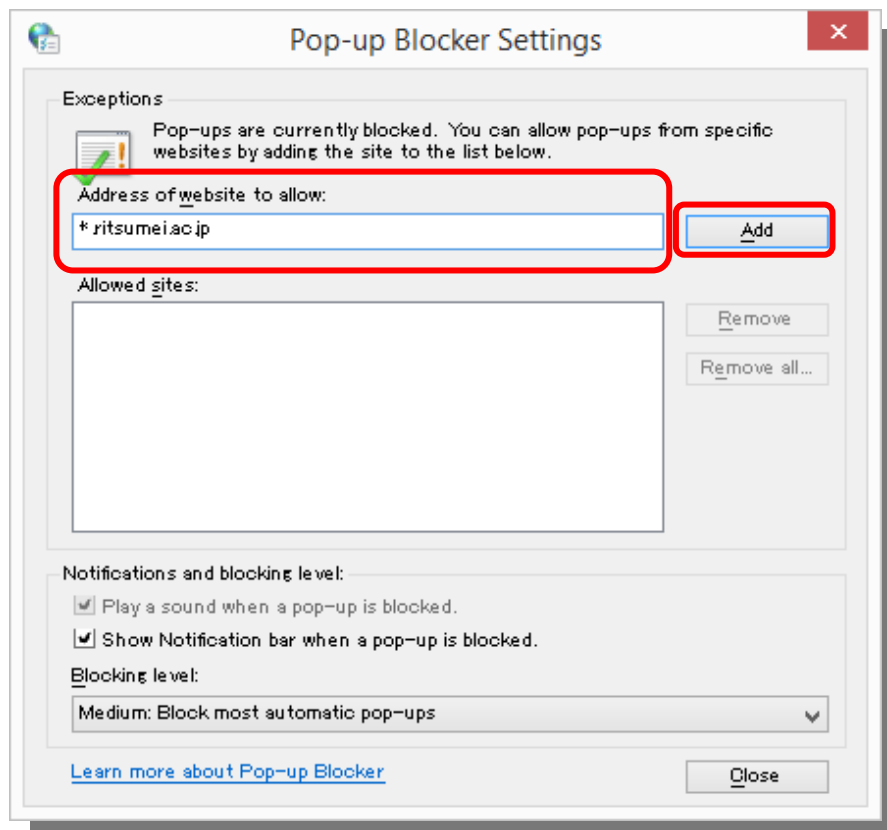
- 2) Click **Internet Options** under **See also** in the lower left corner of the window.



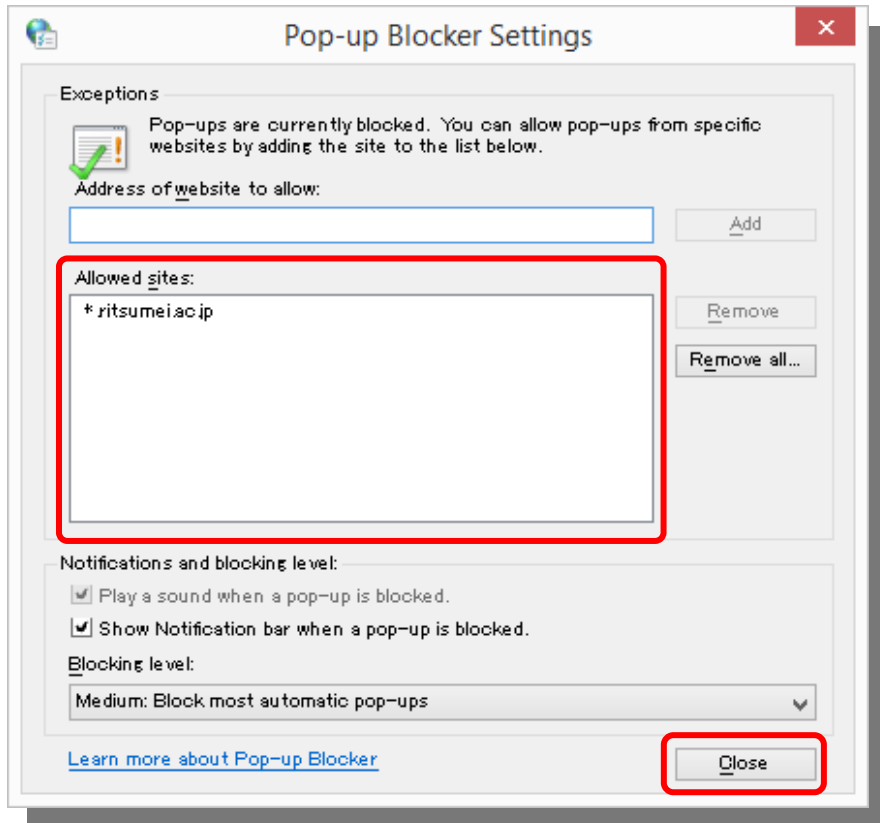
3) Click the **Privacy** tab and click **Settings** under **Pop-up Blocker**.



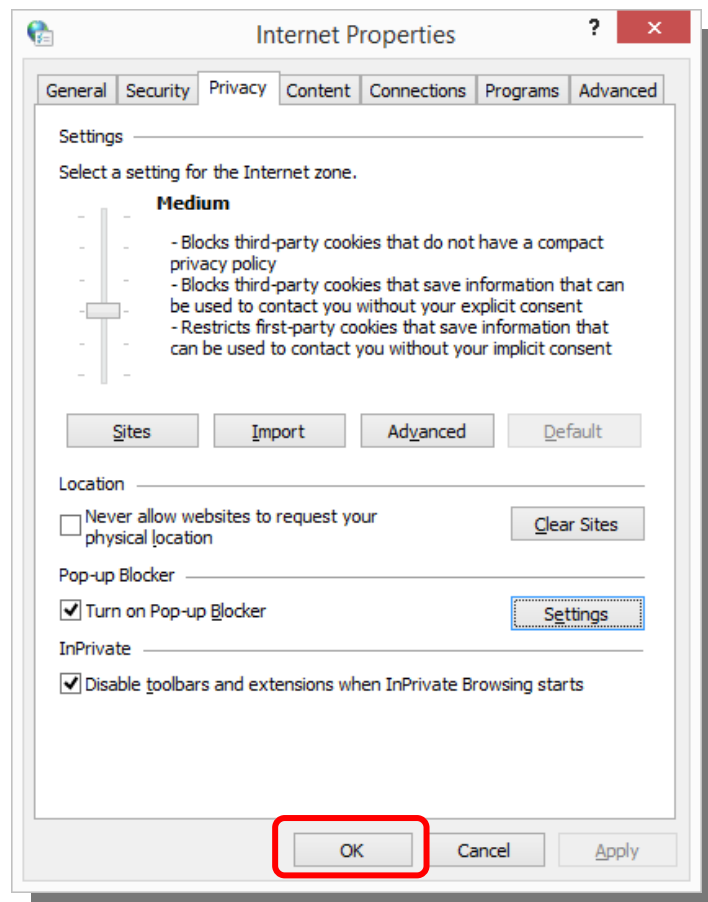
4) Enter *.ritsumeai.ac.jp in **Address of website to allow** and click **Add**.



5) Make sure *.ritsumei.ac.jp is added in **Allowed sites** and click **Close**.



6) Click **OK** to save the settings.



3. Web User Authentication

1) Start a browser, enter your RAINBOW user ID and password in the web user authentication page, and click **Submit**.

If this page does not appear, restart the browser and access a website with an http:// URL. (e.g., <http://www.ritsumeai.ac.jp/>).

► If the page still does not display, make the configuration changes in “Reference 1 – When the web user authentication page does not display” on page 12.



2) The logout window and the Ritsumeikan University homepage appear.

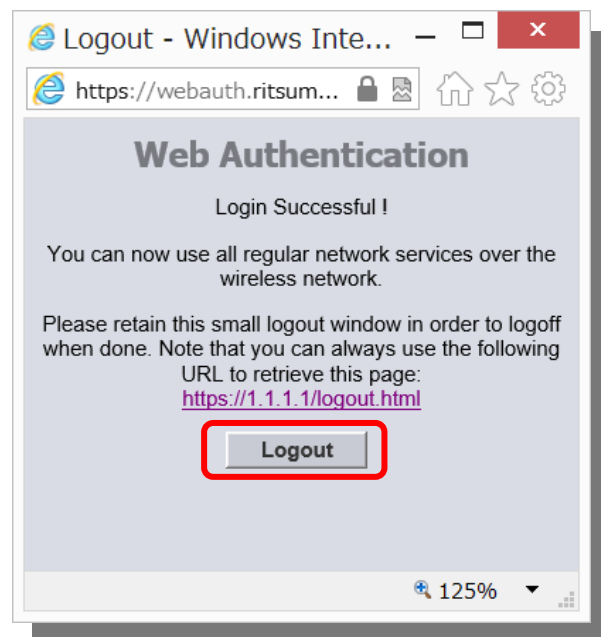
► Do not close the logout window as it is required for logging out from web authentication. If the window is not displayed, the settings in 2. Disabling Pop-up Blockers may not be configured correctly.



4. Logout

1) To exit the wireless LAN network, click **Logout** in the logout window.

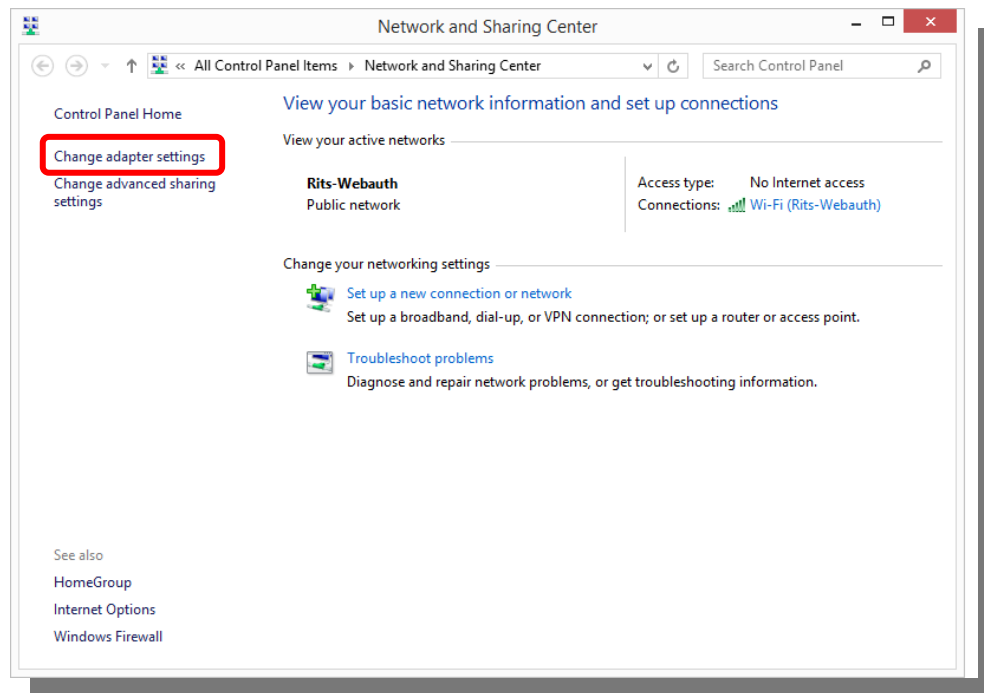
► If you have closed the logout window, access <https://webauth.ritsumei.ac.jp/logout.html> and the following window will appear. You are recommended to bookmark this page for future reference.



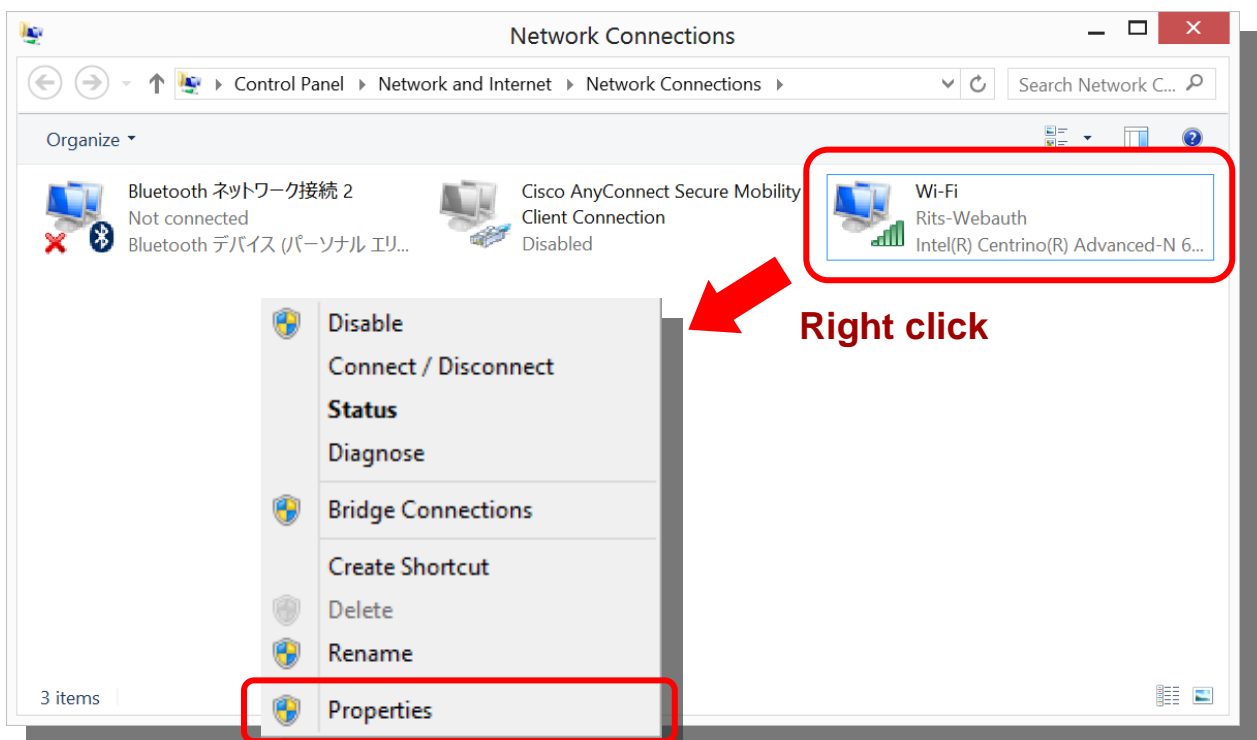
Reference 1 – When the web user authentication page does not display:

If the DNS is set to a specific DNS such as Google Public DNS, the web user authentication window will not appear. You will need to delete the specified DNS server addresses and change the settings so that the address is acquired automatically.

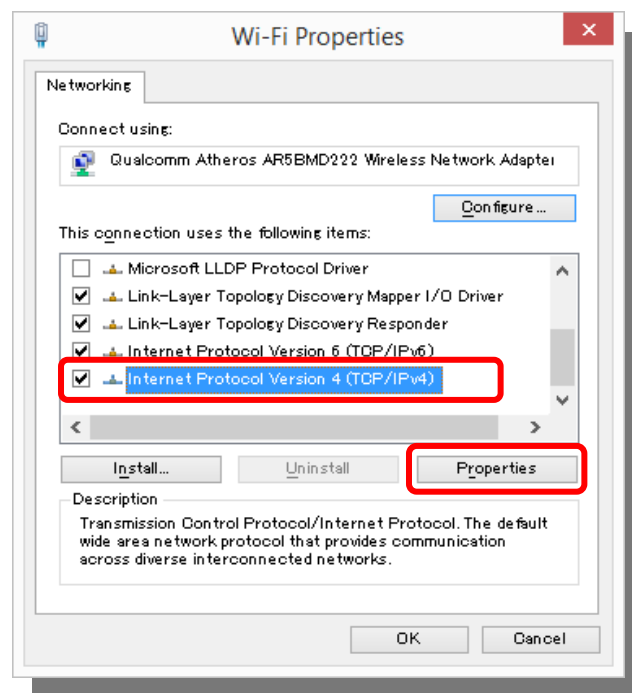
- 1) Click **Change adapter settings** in the lower side of the window of **Network and Sharing Center**.
(Refer to 1. Wireless LAN Settings [SSID] on page 2 for how to display the **Network and Sharing Center**.)



- 2) Right-click **Wi-Fi** and click **Properties**.

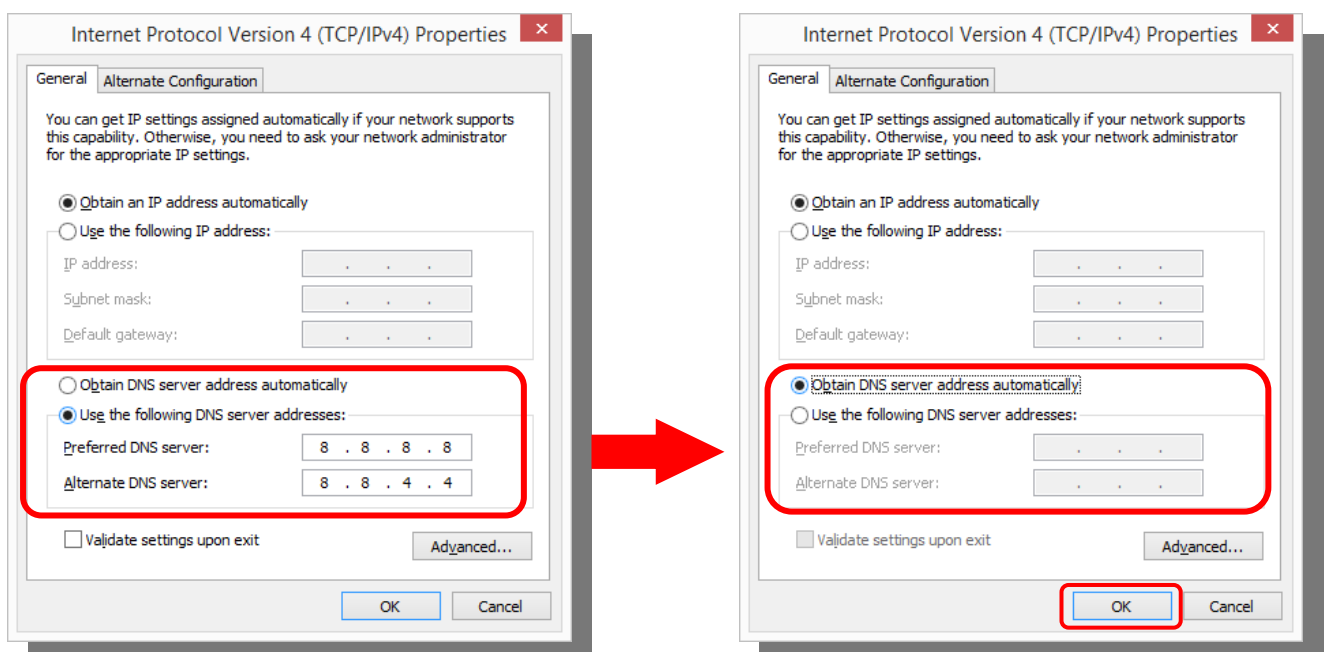


3) Click **Internet Protocol Version 4 (TCP/IPv4)** and click **Properties**.



4) If Google Public DNS (Preferred DNS server: 8. 8. 8. 8 / Alternate DNS server: 8. 8. 4. 4) is set in **Use the following DNS server addresses** is set to, select **Obtain DNS server address automatically** and click **OK**.

If an address other than the Google Public DNS (Preferred DNS server: 8. 8. 8. 8 / Alternate DNS server: 8. 8. 4. 4) has been entered, it may be the address for wireless LAN for off-campus use. Make sure to write down the address and restore the settings when a connection cannot be established off campus.

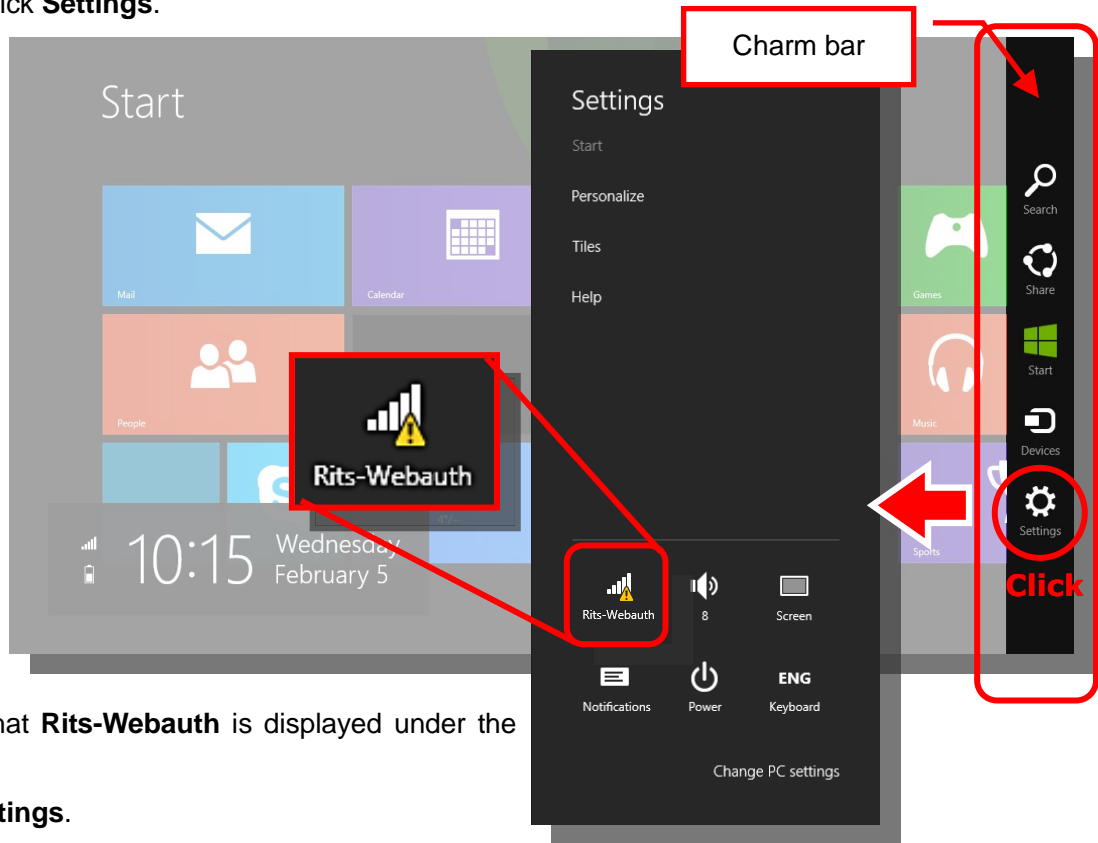


5) Start a browser and proceed to 3. Web user authentication on page 10.

Reference 2 – To use the wireless LAN network next time:

1) Make sure that your computer is connected to Rits-Webauth.


Click the upper or lower right corner of the screen (or swipe from the right side for touch operation) to display the Charm bar, and click **Settings**.



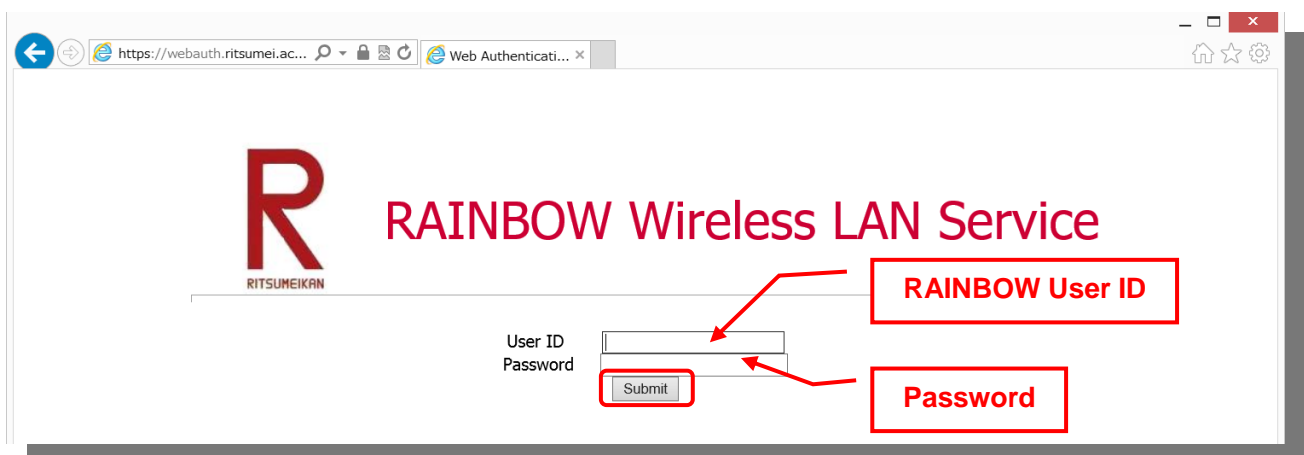
2) Make sure that **Rits-Webauth** is displayed under the



icon in **Settings**.

► If a network other than **Rits-Webauth** is displayed or a  icon is displayed, check Reference 3 – Switch the existing wireless LAN connection on page 15.

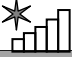
3) Start a browser, enter your RAINBOW user ID and password in the web user authentication page, and click **Submit**.

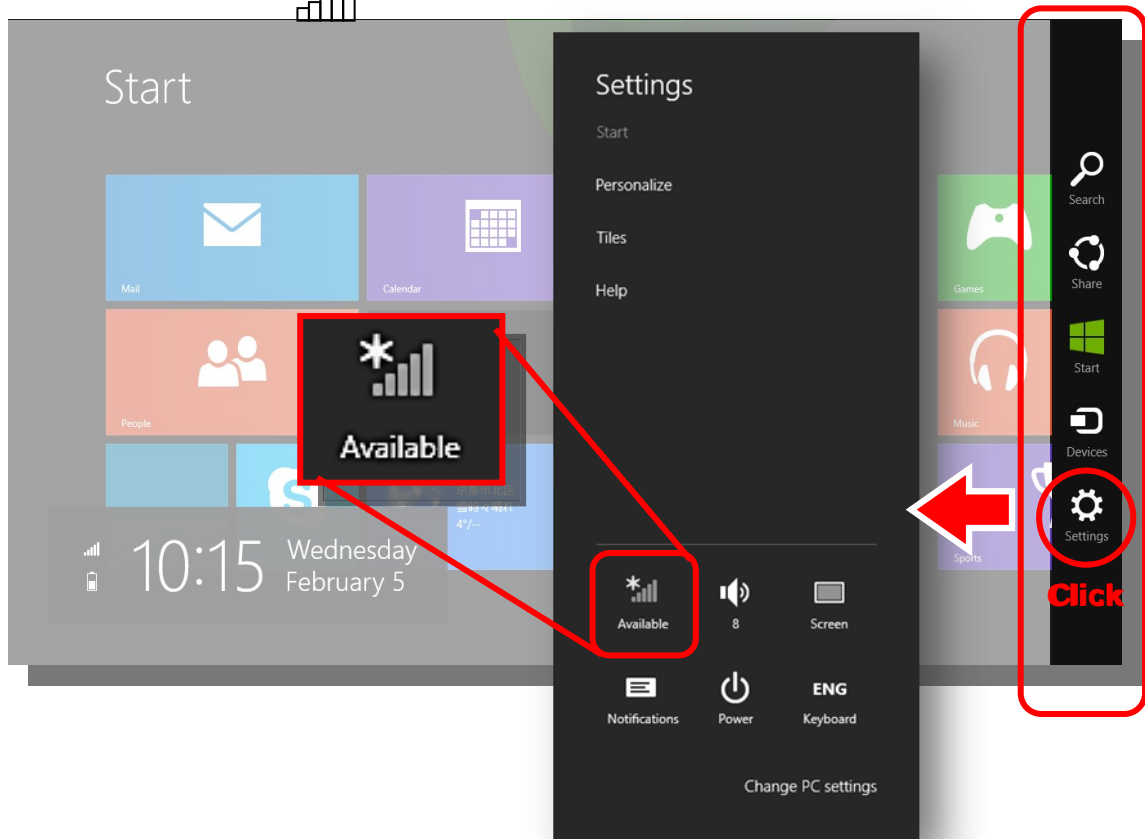


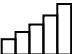
► If the web user authentication page does not appear, restart the browser and access a website with an http:// URL. (e.g., <http://www.ritsumei.ac.jp/>).

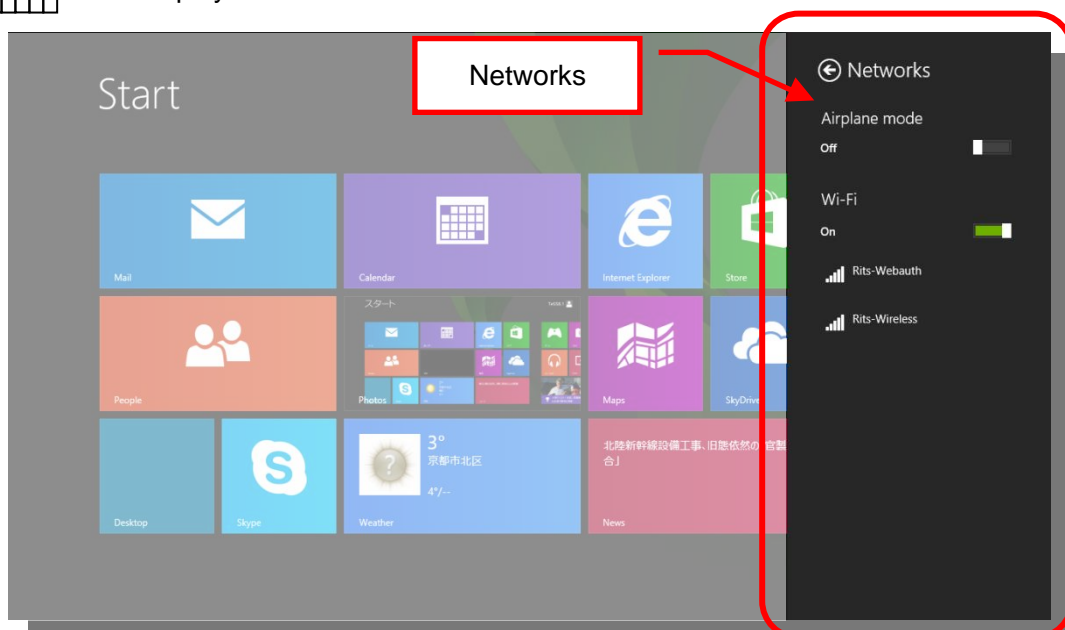
Reference 3 – Switching the existing wireless LAN connection:

Usually if you configure the settings in accordance with this manual, the access points for wireless LAN (on or off campus) will automatically switch. If the switch does not occur automatically, make the following setting changes.

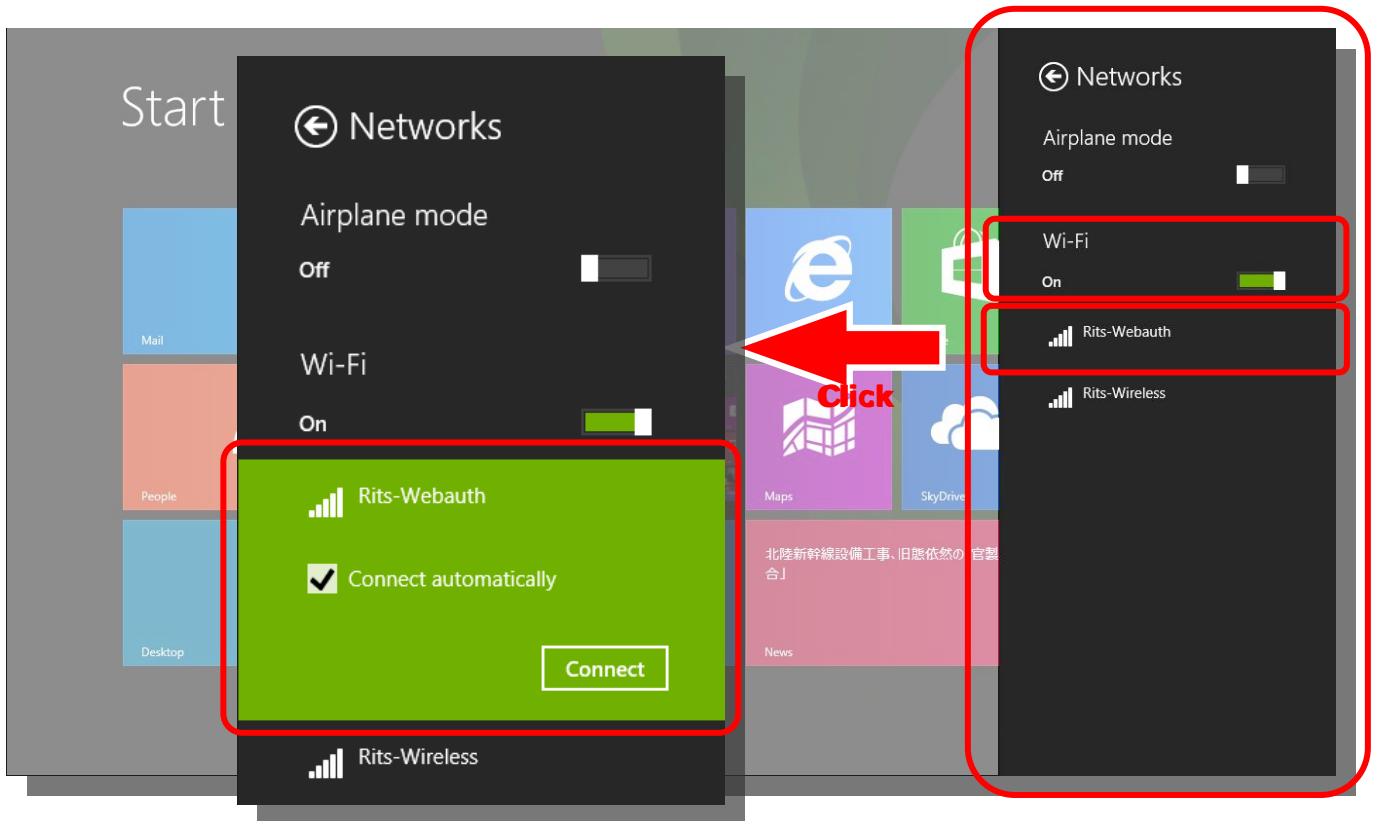
- 1) Click the **Charm bar** → **Settings**. Make sure that a network name other than **Rits-Webauth** or the word **Available** is displayed under the  icon in the lower area of the **Settings**.



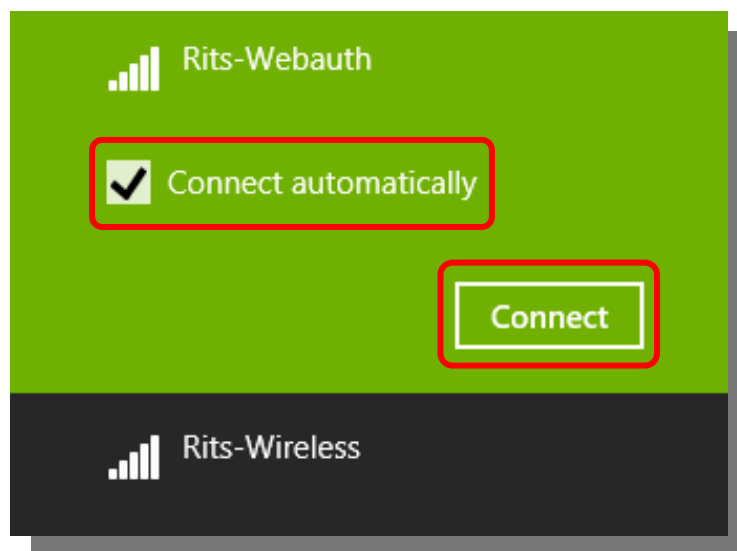
- 2) Click the  icon displayed.



- 3) Make sure **Wi-Fi** is **On** in **Networks** and click **Rits-Webauth** in Wi-Fi.



- 4) Check the **Connect automatically** box and click **Connect**.



- 5) Make sure that there is a connection to Rits-Webauth and proceed to 3. Web user authentication on page 10.