

Setting Up a Wireless LAN Connection (Web User Authentication) for Mac OS X10.7 or later

The following procedures are required to use a Ritsumeikan University wireless LAN (web user authentication).

1. Wireless LAN settings (SSID)
2. Disabling pop-up blockers
3. Web user authentication
4. Logout

This manual explains these four procedures for connecting to the RAINBOW Network using wireless LAN (web user authentication) on Mac OS X10.7 or later.

The wireless LAN network service is available within the wireless LAN service areas on the following campuses:

- Kinugasa Campus
- Biwako-Kusatsu Campus
- Osaka Ibaraki Campus
- Suzaku Campus
- Osaka Umeda Campus
- Tokyo Campus

Please note that the wireless service may not be available at some facilities on the above campuses depending on circumstances.

-Content-

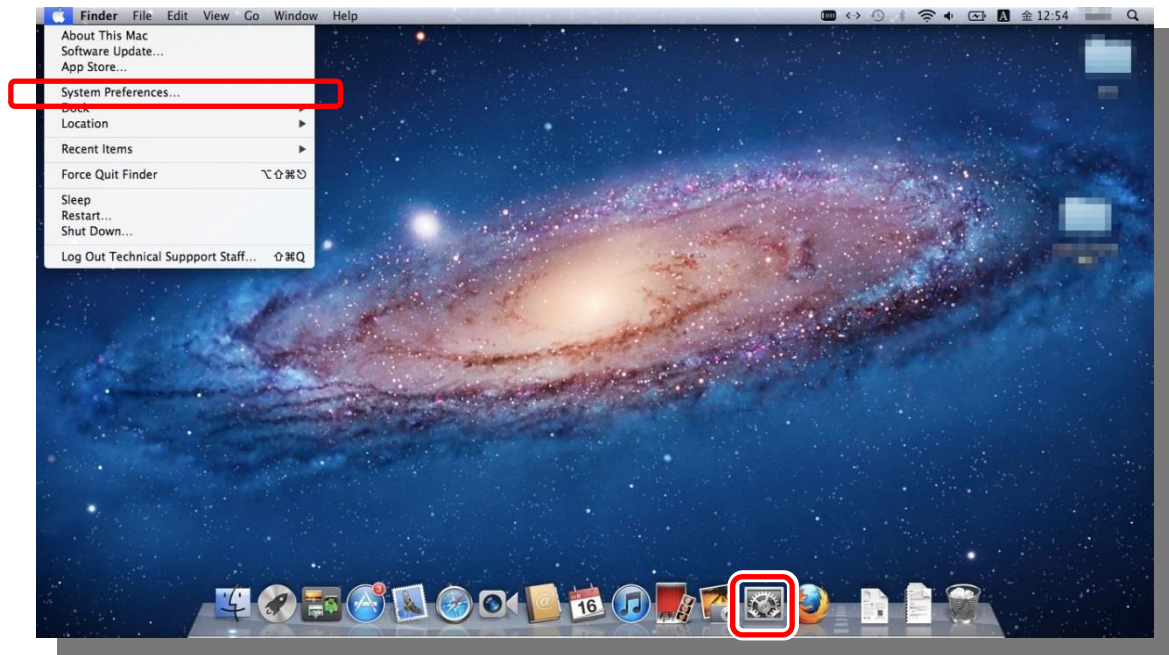
1. Wireless LAN Settings [SSID]	2
2. Disabling Pop-up Blockers	5
3. Web User Authentication	6
4. Logout	7

Reference 1 – When the web user authentication page does not display: 8

Reference 2 – Use the wireless LAN network from the next time: 11

1. Wireless LAN Settings [SSID]

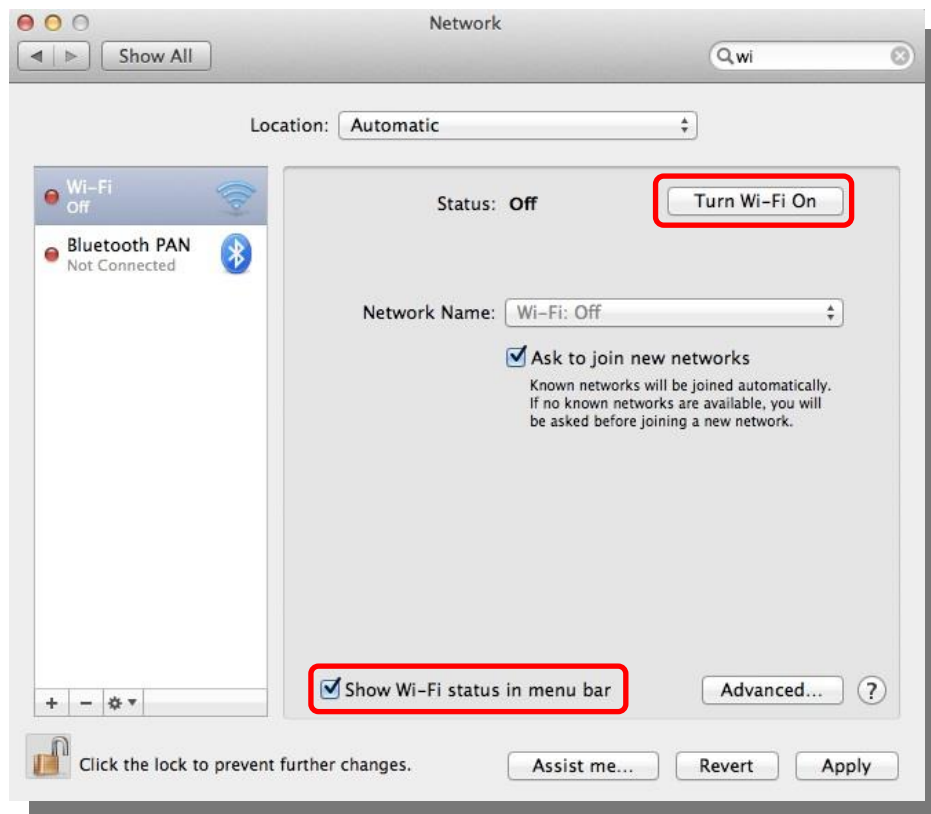
- 1) Click the icon for **System Preferences** in the Dock as shown below. (Or click the Apple logo in the top left corner of the screen and click **System Preferences**.)



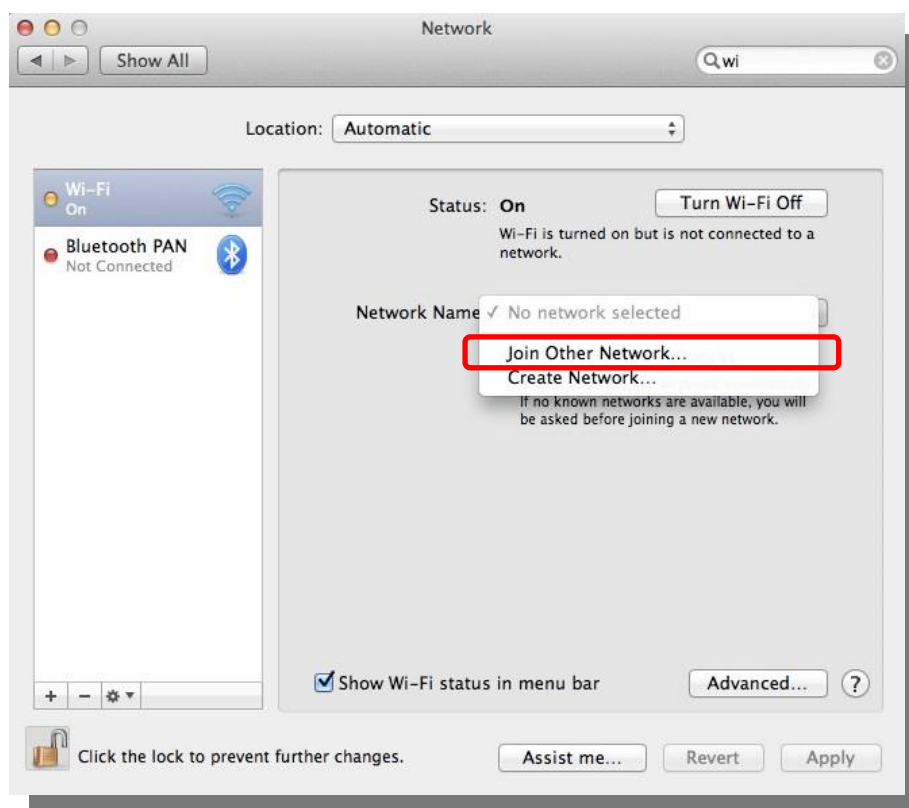
- 2) Click **Network**.



- 3) If Wi-Fi is turned off, click **Turn Wi-Fi On**. Check the **Show Wi-Fi status in menu bar** box.



- 4) Click the **Network Name** and click **Join Other Network**.



5) In the following display, enter **Rits-Webauth** (case-sensitive) for **Network Name** and select either **WPA2 Personal** or **WPA Personal** for Security.

► For a safer connection, it is recommended that **WPA2 Personal** is selected. However, if the connection does not establish correctly, set it to **WPA Personal** instead.

Enter **webauth.ritsumei.ac.jp** for the password and click **Join**.

[For WPA2 Personal]



The image shows a Windows 'Find and join a Wi-Fi network' dialog box. The title bar is light blue with a Wi-Fi icon. The main text says 'Find and join a Wi-Fi network.' and 'Enter the name and security type of the network you want to join.' Below this, there are three input fields: 'Network Name' with the text 'Rits-Webauth', 'Security' with a dropdown menu showing 'WPA2 Personal', and 'Password' with a masked password of 12 dots. Below the password field are two checkboxes: 'Show password' (unchecked) and 'Remember this network' (checked). At the bottom, there are three buttons: a help button with a question mark, 'Show Networks', 'Cancel', and 'Join'. The 'Join' button is highlighted with a red rectangular border.

[For WPA Personal]



The image shows a Windows 'Find and join a Wi-Fi network' dialog box, similar to the one above but with 'WPA Personal' selected in the Security dropdown menu. The 'Network Name' is 'Rits-Webauth' and the 'Password' is masked with 12 dots. The 'Remember this network' checkbox is checked. The 'Join' button at the bottom right is highlighted with a red rectangular border.

2. Disabling Pop-up Blockers

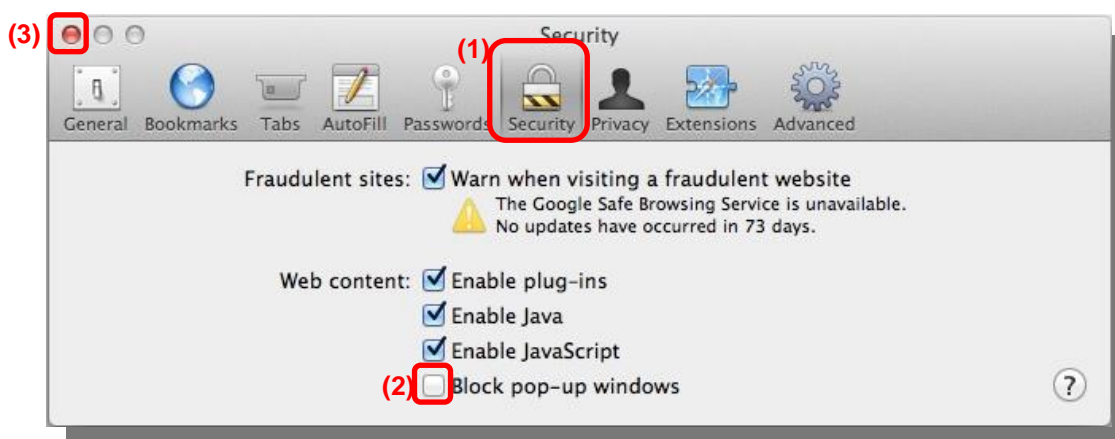
1) Click **Safari** in the Dock.



2) Click **Safari** in the menu bar of the window and select **Preferences**.



3) Select the **Security** tab, uncheck **Block pop-up windows** and close the window.



► In Safari, pop-up windows cannot be blocked on a per-website basis. If necessary, use a different browser such as Firefox. In a browser that allows configuration of the pop-up blocker on a per website basis, add **ritsumei.ac.jp** under allowed pop-ups.

3. Web User Authentication

1) Enter your RAINBOW user ID and password, and click **Submit**.

▶ If this page does not appear, restart the browser and access a website with an http:// URL. (e.g., <http://www.ritsumeikai.ac.jp/>).

▶ If the page still does not display, make the configuration changes in “Reference 1 - When the web user authentication page does not display” on page 8.



2) The logout window and the Ritsumeikan University homepage will appear.



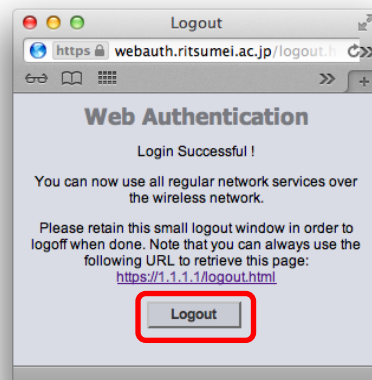
▶ Do not close the logout window as it is required for logging out from web authentication.

3) The network should remain connected unless the authentication is terminated. If disconnected, restart the browser and follow the authentication process again.

4. Logout

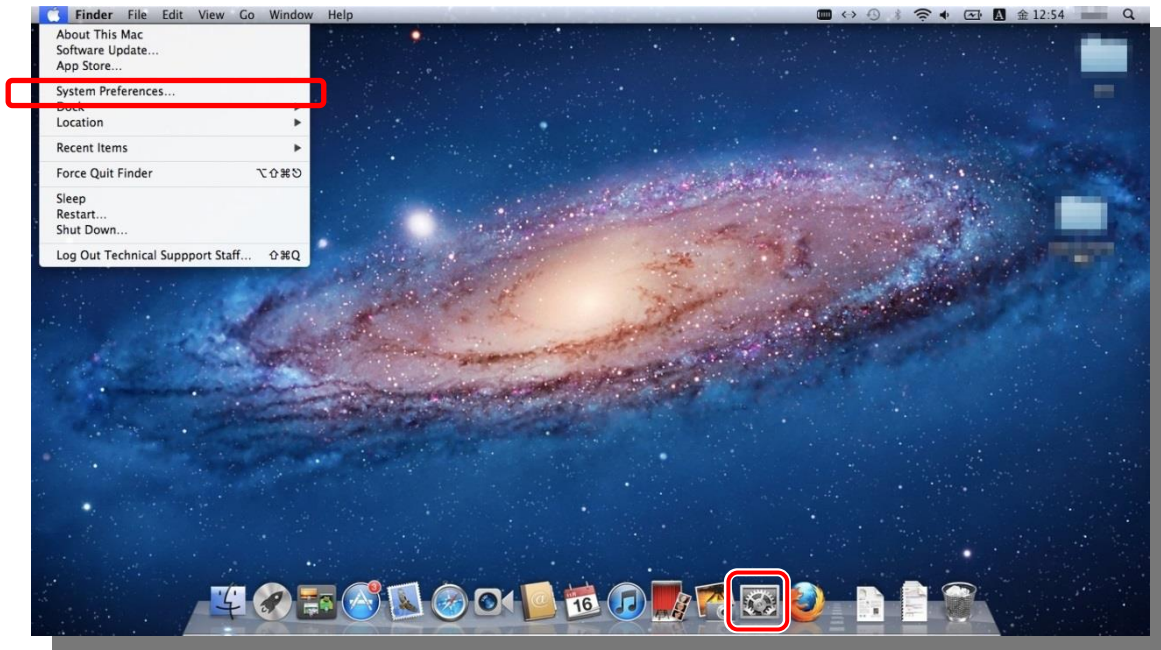
1) To exit the wireless LAN network, click **Logout** in the logout window.

► If you have closed the logout window, access <https://webauth.ritsumei.ac.jp/logout.html> and the following window will appear. You are recommended to bookmark this page for future reference.



Reference 1 – When the web user authentication page does not display:

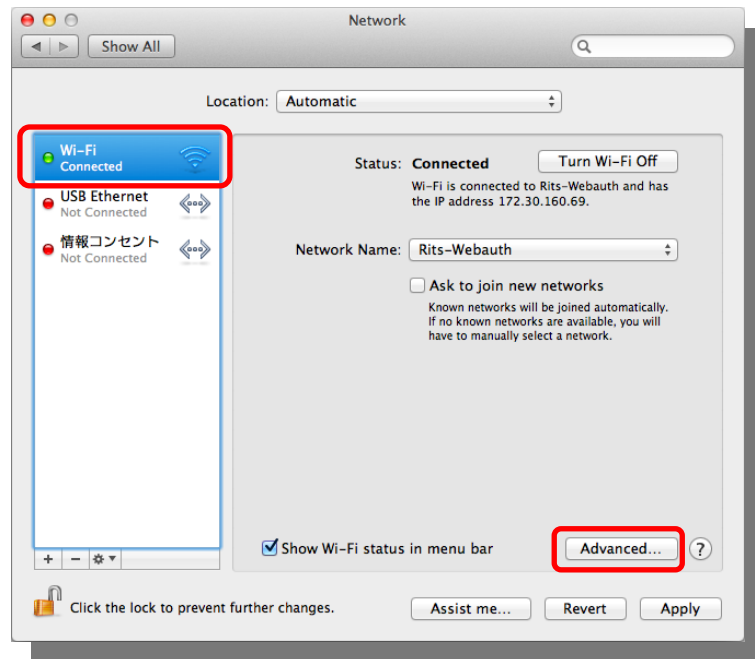
1) If the DNS settings such as Google Public DNS are already configured, the web user authentication window does not appear. Delete the settings in the DNS server and change it to acquire the addresses automatically. Click the icon for **System Preferences** in the Dock as shown below. (Or click the Apple logo in the top left corner of the screen and click **System Preferences**.)



2) Click **Network**.

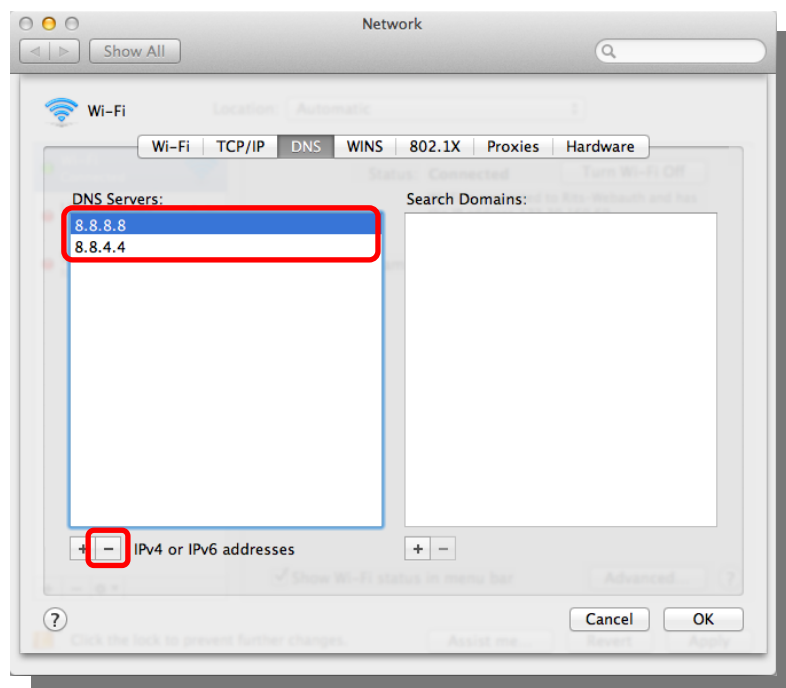


3) While **Wi-Fi** is selected on the left side, click **Advanced**.



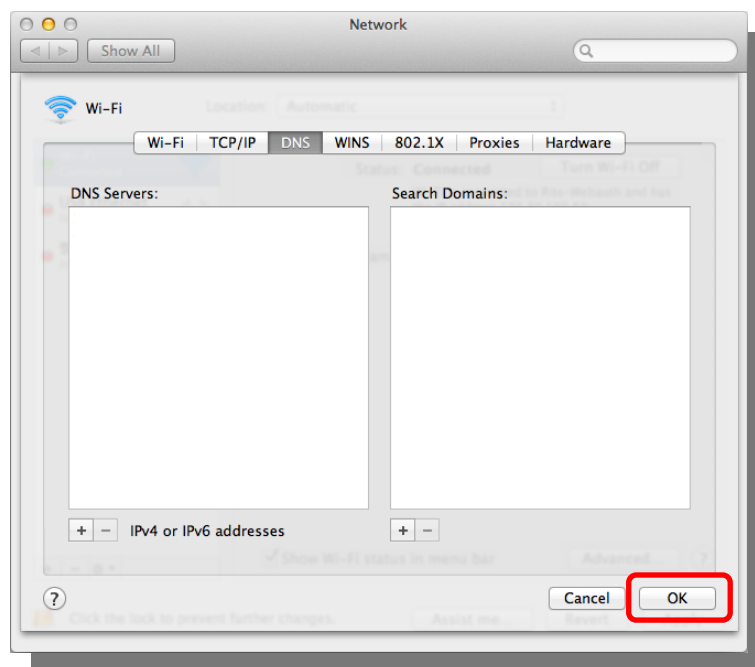
4) Select the **DNS** tab. In the **DNS Servers**, if the Google Public DNS (Preferred DNS server: 8. 8. 8. 8 / Alternate DNS server: 8. 8. 4. 4) is already set, click “-” to delete while the server is selected respectively.

If an address other than the Google Public DNS (Preferred DNS server: 8. 8. 8. 8 / Alternate DNS server: 8. 8. 4. 4) is already entered, it may be the address for wireless LAN for off-campus use. Make sure to write down the address and restore the settings if the connection could not be established off campus.

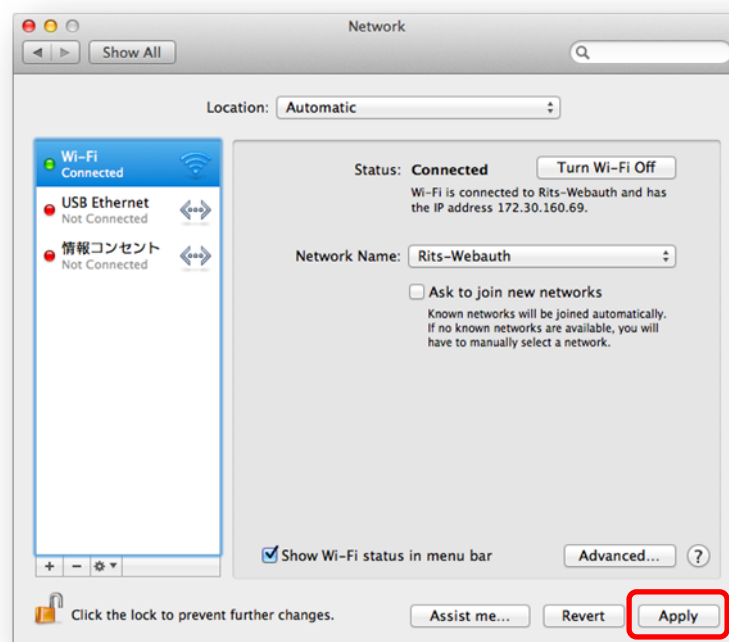


5) After deleted, make sure that nothing else is listed in **DNS Servers** and click **OK**.

Deleted IP addresses may still be displayed in grey color, but proceed to the next step.



6) Click **Apply** to save settings.



The settings are complete.

Reference 2 – Use the wireless LAN network from the next time:

- 1) Make sure that the wireless LAN is connected to the access point, Rits-Webauth.
- 2) Start a browser, enter your RAINBOW user ID and password in the web user authentication page, and click **Submit**.



R
RITSUMEIKAN

RAINBOW Wireless LAN Service

User ID

Password

► If this page does not appear, restart the browser and access a website with an http:// URL. (e.g., <http://www.ritsumei.ac.jp/>).